



Integrated Medical Interiors
A step change in the patient experience

IMI

About IMI pod

IMI features

Flexible ward configurations - New build and refurbishment

Energy Savings

Green Credentials

About IMI

*Providing innovative design solutions
to the healthcare environment*

IMI

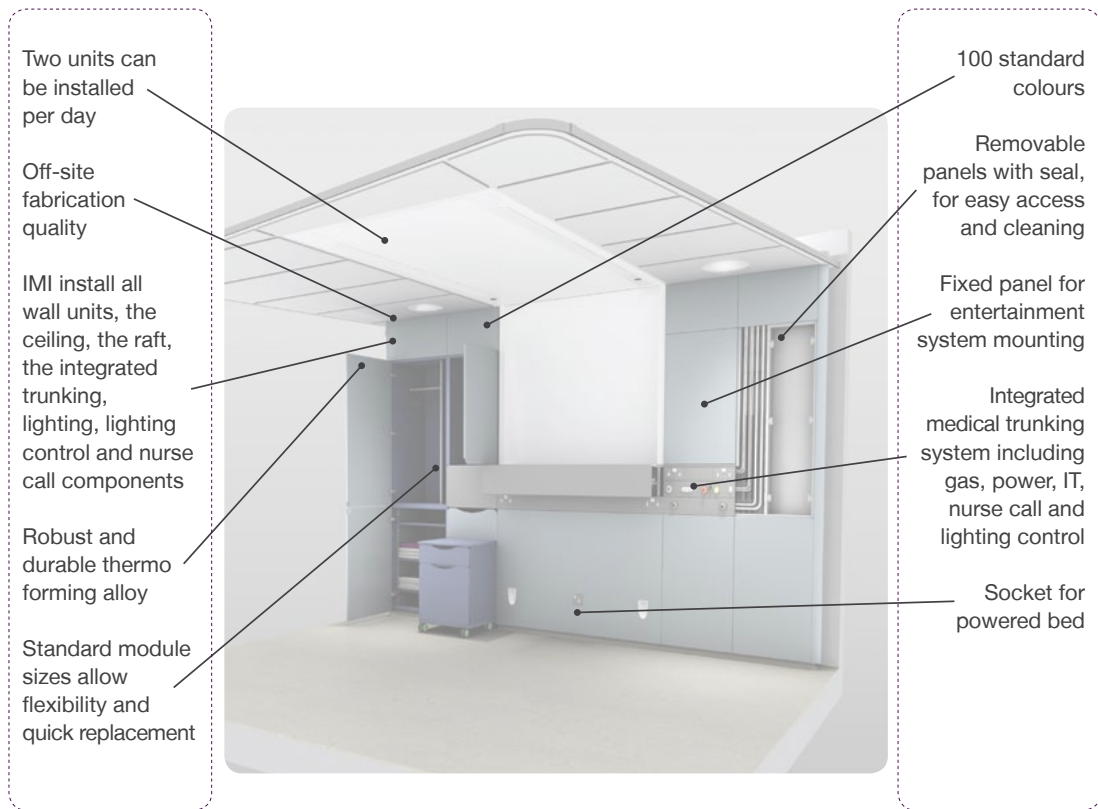
The **IMI pod** is an off-site fabricated, modular, future ready, integrated patient environment, improving the efficiency of lighting and energy use within the healthcare environment.

It delivers a new approach to ward design creating an environment that focuses on patient, staff and visitor needs alike. Based on current research and best practice around the healing environment, the resulting ward is light, airy, relaxed, high quality, ergonomic and practical. All known benefits to both patient well being and recovery.

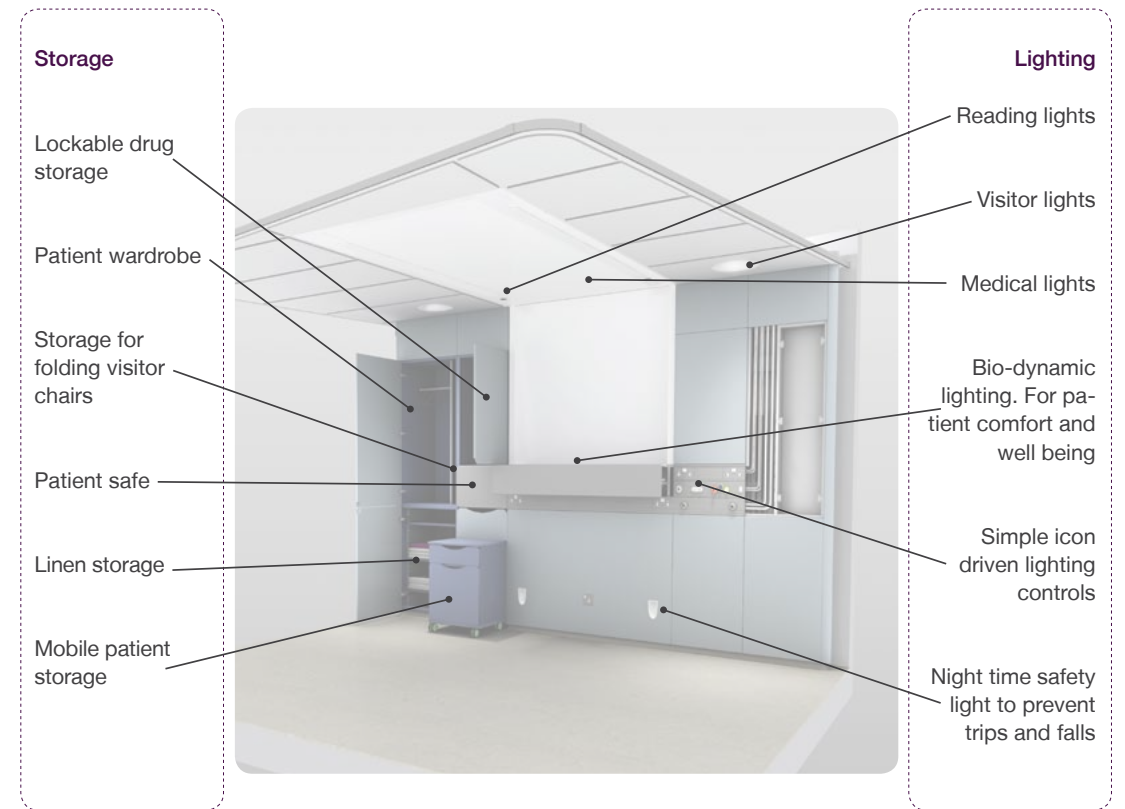


IMI Features

Design, construction and M&E features

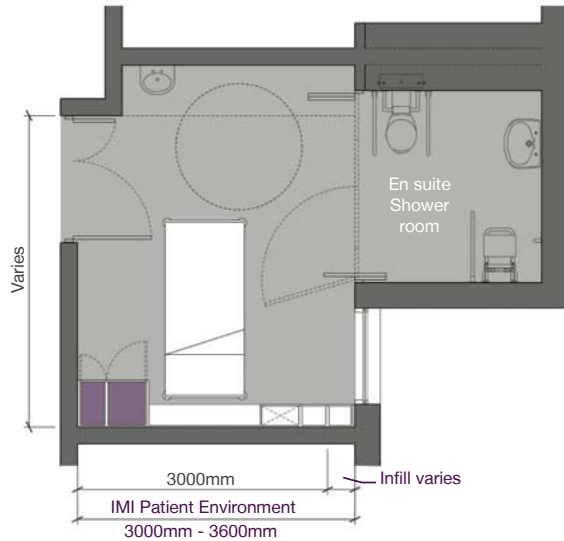


Staff and patient features



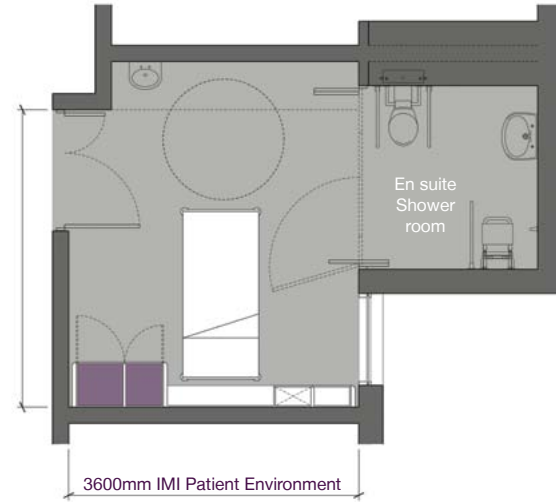
Flexible ward configurations - New build and refurbishment

Example refurbishment single-bed room



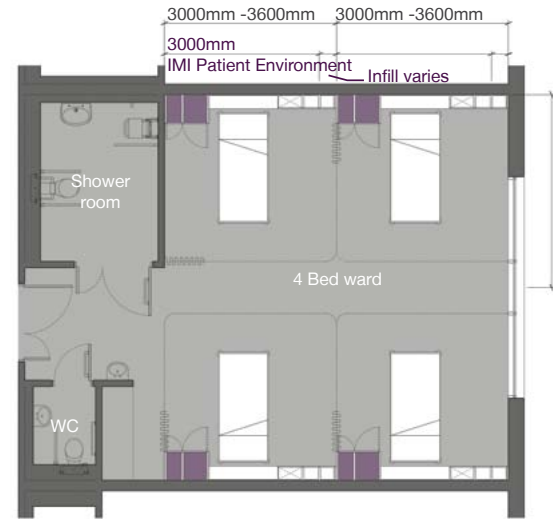
Note: layout does not comply with the Design Manual, HBN 04.01

Layout based on DH single-bed room



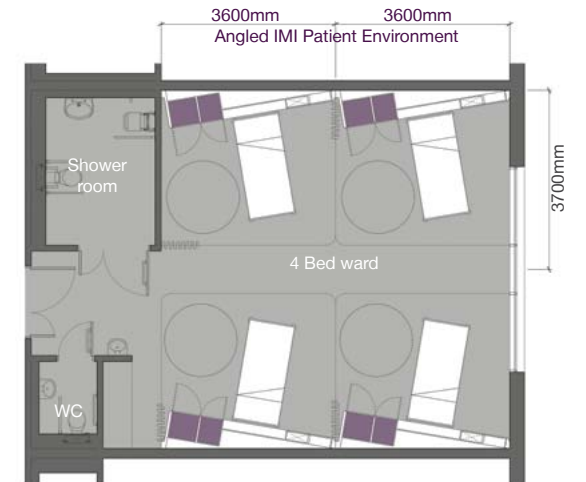
Note: layout complies with the Design Manual, HBN 04.01

Example refurbishment multi-bed ward



Note: layout does not comply with the Design Manual, HBN 04.01

Layout based on DH multi-bed ward



Note: layout complies with the Design Manual, HBN 04.01

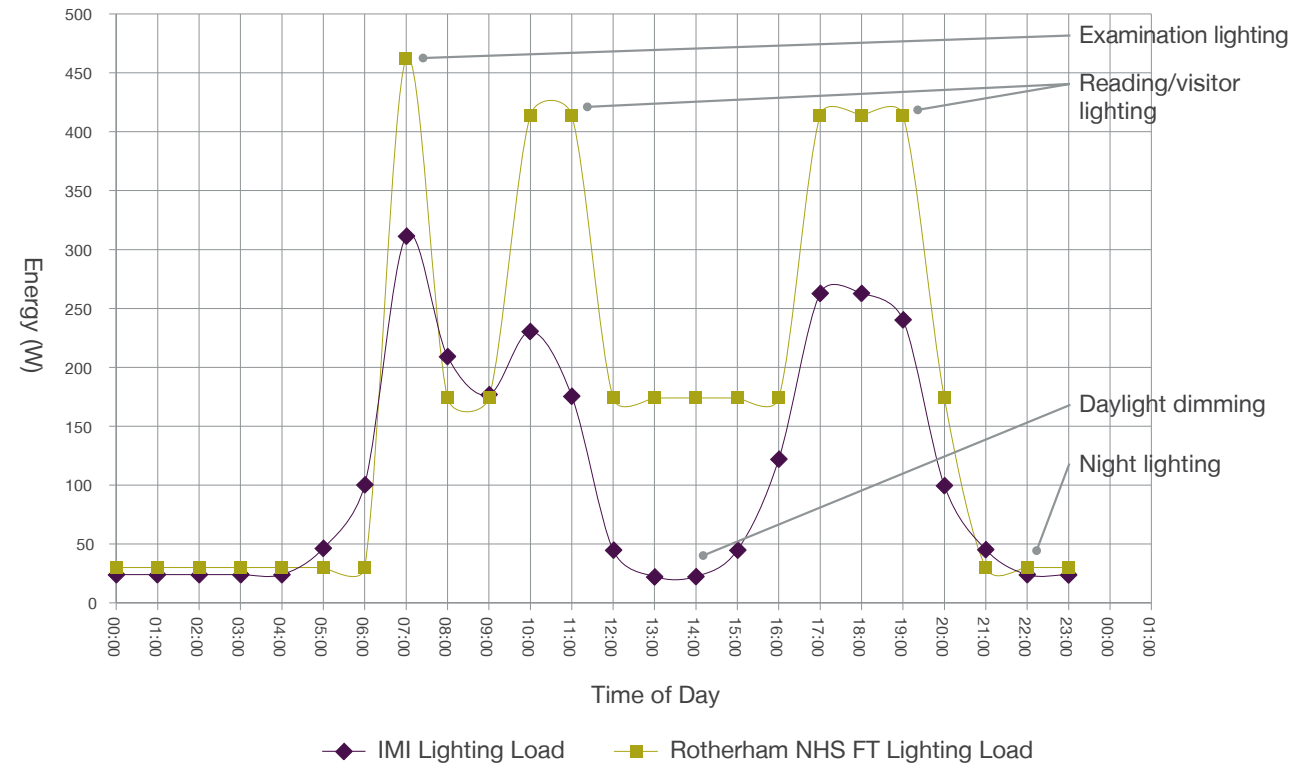
As a modular product there are many other configurations and lengths are available

Energy Savings

Lighting

- The lighting design, luminaires and lighting control deliver significant energy savings over a traditional ward design of approximately 30%
- The luminaires, lamp and control gear deliver considerable maintenance savings of approximately 80%

Existing Load Schedule from Rotherham NHS FT



Green Credentials

Lighting efficiency

The lighting design and components deliver light efficiently to where it is required and only when it is required through a link to a local photocell.

Lamp maintenance

The lamp life of the lighting components ranges from 30,000 to 50,000 hours thus reducing the frequency of maintenance.

Material waste reduction

The off-site factory fabrication minimises raw material waste through an efficient CNC design and cutting process.

Recyclable components

The thermo forming alloy coating used is 100% recyclable. At the end of its life the material is simply peeled from the base and used to create a new roll of thermo forming alloy.

Reduced trades on-site

All components are plug and play, and factory fitted thus reducing the number of trades on-site. IMI install the furniture, medical trunking, sockets, gas outlets, nurse call and lighting control.

Morning

Midday

Medical

Visitor

Reading



